



Paulmann

### Safety Instructions

1, 2, 3, 4, 5, 6, 8, 22, 23, 24, 33, 34



Info

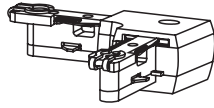
[www.paulmann.com](http://www.paulmann.com)

Paulmann Licht GmbH  
Quezinger Feld 2  
31832 Springe  
Germany

[www.paulmann.com](http://www.paulmann.com)

Art.-Nr.: 969.06  
976.48  
976.49  
976.50

(+MA326)PBO 10/20



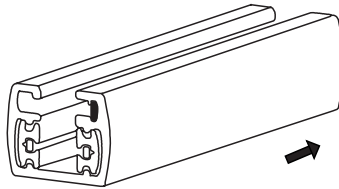
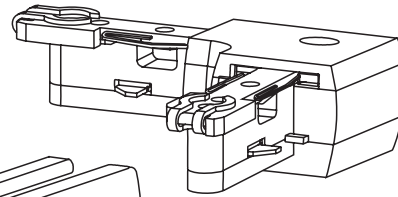
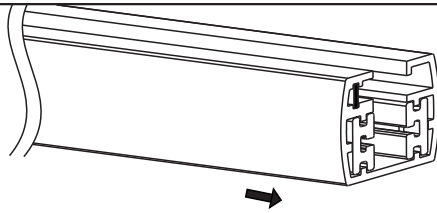
1x



incl.



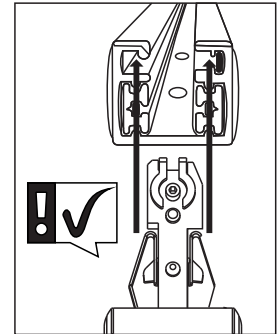
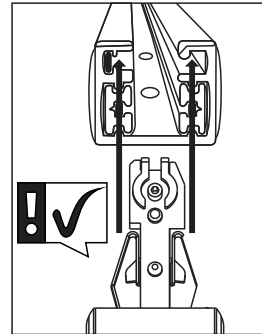
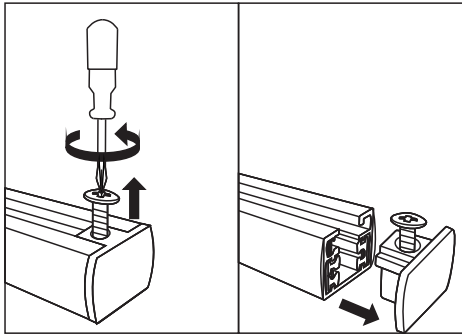
A



**Safety Instructions**  
Nr. 3, 4, 5



off



B

